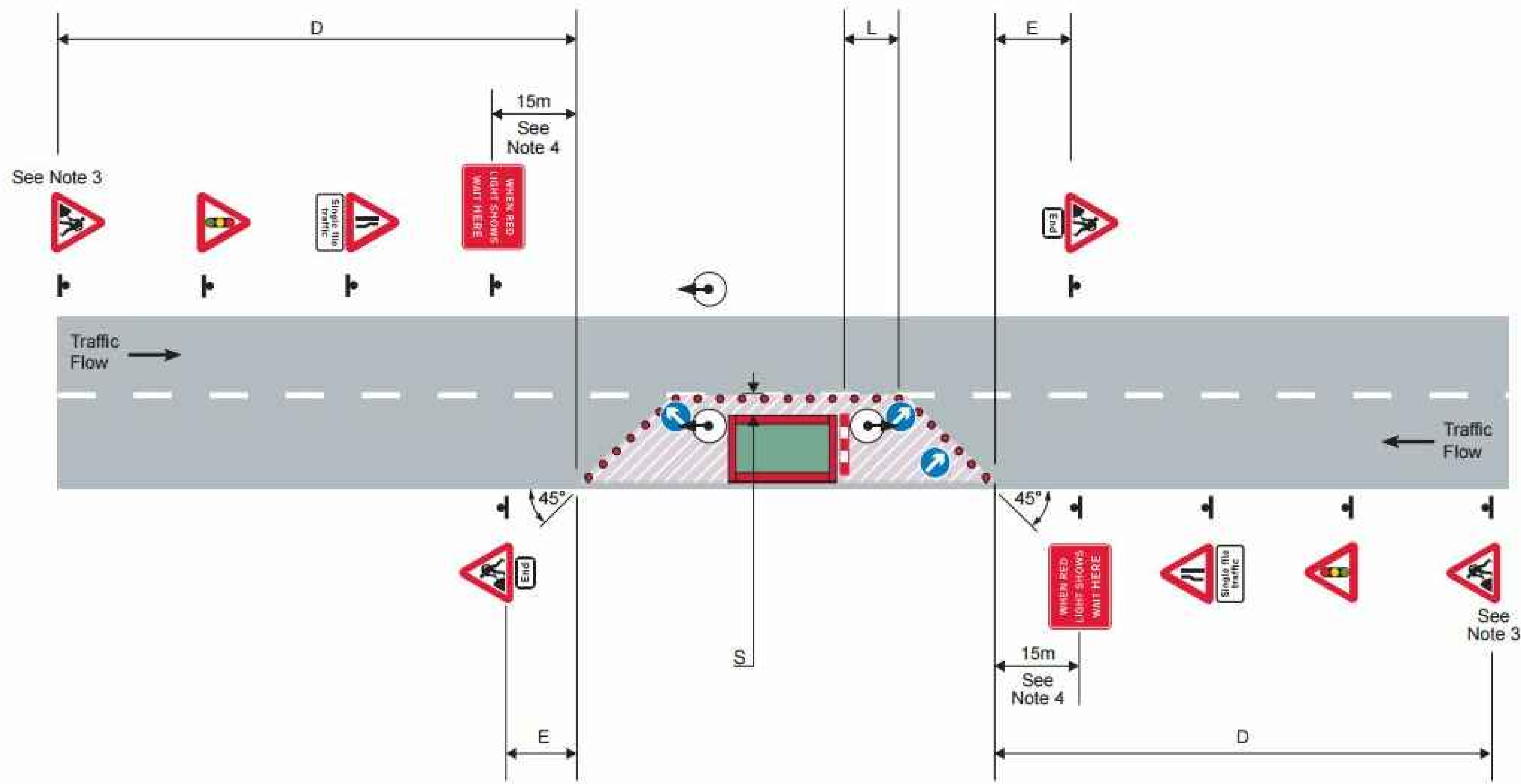


Traffic control by portable traffic signals



Notes

- 1 For numbers and minimum size of cones, and dimensions D, L, S and E, see table inside back cover.
- 2 An information board (omitted here for clarity) must be displayed.
- 3 A supplementary distance plate is required for roads with a permanent speed limit of 50 mph or more.
- 4 This distance may have to be increased in some cases to allow larger vehicles to pass the works.

Setting out site

(Distances in metres unless stated otherwise, numbers are minimum numbers)

Type of road	Minimum visibility distance to first sign	D Distance from first sign to start of lead-in taper	Lead-in taper T Taper length No of cones No of lights	Width of works including sideways safety zone							S Minimum width of sideways safety zone	E Distance from last cone to End of works sign	Minimum size of signs (mm)
				1m	2m	3m	4m	5m	6m	7m			
Single carriageway – speed limit 30 mph or less	60	20 to 45	T Taper length No of cones No of lights	13	26	39	52	65	78	91	0.5	10 to 30	600
Single carriageway – speed limit 40 mph	60	45 to 110	T Taper length No of cones No of lights	20	40	60	80	100	120	140	0.5	30 to 45	750
Single carriageway – speed limit 50 mph or more	75	275 to 450	T Taper length No of cones No of lights	25	50	75	100	125	150	175	1.2	30 to 45	750
All-purpose dual carriageway – speed limit 40 mph or less	60	110 to 275	T Taper length No of cones No of lights	25	50	75	100	125	150	175	0.5	30 to 45	750

Speed limit mph	20	30	40	50	60	Speed limit mph	30 or less	40 or more
L Longways clearance	0.5	0.5	15	30	60	C Clearance to works vehicle	2	5

Notes

- 1 For roads covered by this Code, the minimum height of cones is 450 mm where the speed limit is 40 mph or less, and 750 mm where the speed limit is 50 mph or more.
- 2 The maximum spacing between cones in longitudinal lengths shall be 9 metres, but no fewer than two cones shall be used in any length between tapers.
- 3 Lead-in tapers where two-way traffic control is used, and all exit tapers shall be at about 45° to the kerb line with cones spaced 1.2 metres apart maximum.
- 4 In certain circumstances on congested roads with speed limits of 30 mph or less, the lead-in taper may be reduced to 45° (see page 19).
- 5 The longways clearance (L) is the distance between the end of the lead-in taper and the first traffic barrier placed across the lane.

0	FEB 16		AP	PCR	PCR	ST
Rev	Rev. Date	Purpose of revision	Drawn	Checked	Rev'd	Appr'd

This drawing is not to be used in whole or part other than for the intended purpose and project as defined on this drawing. Refer to the contract for full terms and conditions.

<p>County Hall, Walton Street, Aylesbury, Buckinghamshire, HP20 1UY</p>	<p>Client</p> <p>MIKE FREESTONE INTERIM DIRECTOR OF TRANSPORT TRANSPORT, ECONOMY AND ENVIRONMENT SERVICES</p>	<p>Drawing title</p> <h2>Traffic Management General Layout</h2>
<p>Project</p> <p>A413 CYCLE ROUTE WINSLOW TO BUCKINGHAM DETAIL DESIGN</p>	<p>Drawing status</p> <p>DETAIL</p>	<p>Scale</p> <p>NOT TO SCALE DO NOT SCALE</p>
<p>Drawing number</p> <p>E90A.90.MEA-DET-TM01</p>	<p>Rev</p> <p>0</p>	